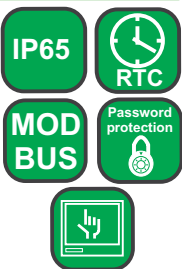


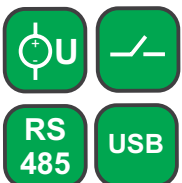
## FEATURES:



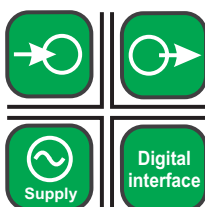
## INPUTS:



## OUTPUTS:



## GALVANIC ISOLATION:



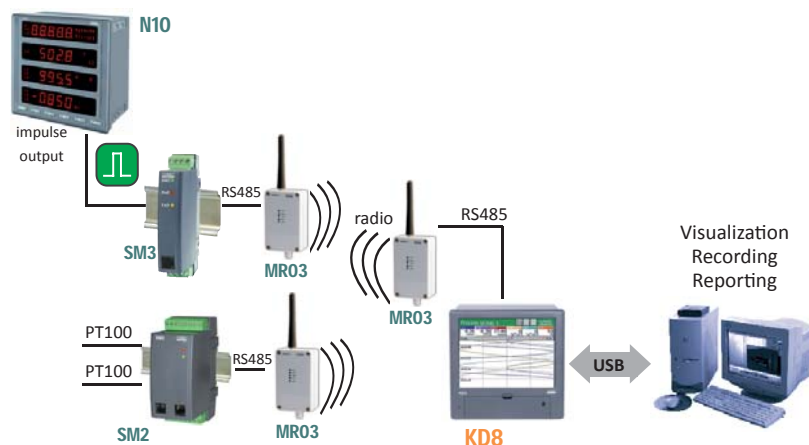
Export department:  
English: +48 68 32 95  
302 / 321 / 276 / 386 / 233  
German: +48 68 32 95 305  
French: +48 68 32 95 304  
Russian: +48 68 32 95 321  
Fax: +48 68 32 54 091  
e-mail: export@lumel.com.pl

LUMEL S.A.  
ul. Sulechowska 1  
65-022 Zielona Góra  
POLAND  
[WWW.LUMEL.COM.PL](http://WWW.LUMEL.COM.PL)



- Intuitive servicing - LCD TFT 5.7" screen, with touch panel.
- Data archiving on CompactFlash card, capacity up to 4 GB.
- IP65 protection grade on the front panel.
- 3 or 6 analog programmable measuring inputs.
- 6 or 12 alarms outputs.
- 4 or 8 digital inputs.
- Visualization of measurements in digital form, analog indicators, diagrams, bargraphs.
- RS-485 and USB serial interfaces.
- MS Windows® CE operating system.
- PC softwares: KD8 SETUP, KD CHECK, KD CONNECT, KD ARCHIVE.
- Programmable events.
- Menu available in various language versions.

## EXAMPLE OF APPLICATION

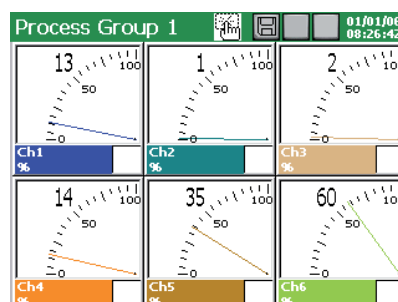
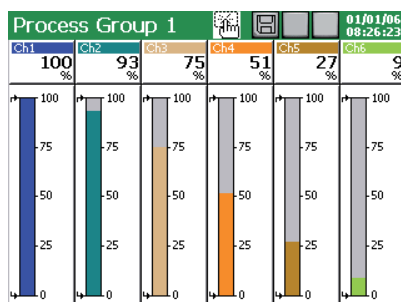
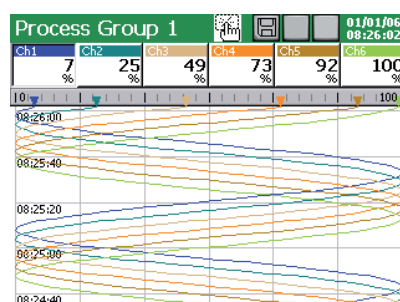
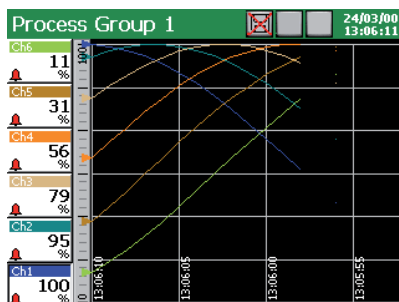


System of measurement, control and recording of temperature and energy with wireless communication.

## EXAMPLES OF MEASURING DATA PRESENTATION

### Various forms of data display:

- linear diagrams,
  - digital indicators,
  - analog views,
  - bargraphs,
  - tables and others.
- (manual and automatic switching between screens.)



## INPUTS

Input signal	Measuring range/ Accuracy class (%)		Minimal subrange/ Accuracy class (%)	
Voltage	0 .. ±9999 mV	0.15	5 mV	0.25
Current	0 .. ±20 mA	0.15	1 mA	
Thermocouple (TC): <b>J</b> (Fe-CuNi)	-200 .. 1200°C	0.1	100°C	1
<b>K</b> (NiCr-NiAl)	-200 .. 1370°C		130°C	0.7
<b>N</b> (NiCrSi-NiSi)	-200...1300°C		200°C	0.5
<b>E</b> (NiCr-CuNi)	-200...1000°C		100°C	1
<b>R</b> (PtRh13-Pt)	0 .. 1760°C	0.2	540°C	0.3
<b>S</b> (PtRh10-Pt)	0 .. 1760°C		570°C	0.3
<b>T</b> (Cu-CuNi)	-200 .. 400°C	0.1	110°C	0.9
<b>B</b> (PtRh30-PtRh6)	400 .. 1820°C	0.2	1000°C	0.2
<b>L</b> (GOST)	-200 .. 800°C	0.1	90°C	0.2
<b>K</b> (GOST)	-200 .. 1370°C		130°C	0.7
Resistance transmitter (RTD): <b>Pt 100</b>	-200 .. 850°C	0.15	50°C	0.25
<b>Pt 500</b>		0.3		0.5
<b>Pt 1000</b>		0.3		
<b>Ni 100</b>	-60 .. 180°C	0.15		0.25
<b>Cu 100</b>	-50 .. 180°C			
<b>GR.21</b> (GOST'78) (GOST'94)	-260 .. 1100°C			
<b>50P</b> (GOST'78) (GOST'94)				
<b>100P</b> (GOST'78)				
<b>100P</b> (GOST'94)	-200 .. 200°C			
<b>50M</b> (GOST'78) (GOST'94)				
<b>100M</b> (GOST'78) (GOST'94)				
Potentiometric transmitter	50 .. 2000 Ω			
Resistance transmitter	0 .. 2000 Ω		100 Ω	
Logic input	control signal 0/5 .. 24 V d.c.		switching frequency up to 50 Hz	

## OUTPUTS

Output type	Properties
Relay	- electromagnetic relays: ≤ 250 V a.c./1 A or ≤ 30 V d.c./1 A
Output to supply object transducers	- 2 outputs 24 V d.c./ 30 mA

## DIGITAL INTERFACE

Interface type	Properties
RS-485	interface: MODBUS Slave, baud rate 0.3 .. 256 kbit/s, transmission mode: ASCII/ RTU
USB	device V.1.1, socket USB-B-G

## EXTERNAL FEATURES

Supply voltage	90 .. 230 .. 253 V	input power ≤ 30 VA
Temperature	operating: 0 .. 23 .. 55°C	storage: -20 .. 60°C
Humidity	< 70%	condensation inadmissible

## RATED OPERATING CONDITIONS

Display field	LCD 5.7" TFT type	320 x 240 pixels, with touch screen
Overall dimensions	144 x 144 mm	panel cut-out dimensions: 138+1 x 138+1 mm
Weight	< 2 kg	
Protection grade	from frontal side: IP65	from terminal side: IP20

## SAFETY AND COMPATIBILITY REQUIREMENTS

Electromagnetic compatibility	noise emissions	acc. to EN 61000-6-4
	noise immunity	acc. to EN 61000-6-2
Isolation between circuits	500 V d.c.	acc. to EN 61010-1
Isolation between supply and measuring system	2 kV	
Pollution level	2	
Installation category	II	
Maximal operating voltage in relation to earth	for the measuring system, relays and supply: 500 V	acc. to EN 61010-1
Altitude above sea level	< 2000 m	

**SOFTWARES**  
ASSISTING THE  
KD8 RECORDER  
WORK:

**KD ARCHIVE**  
Software desti-  
ned to review  
and analyse  
archive data  
from the  
recorder on a PC  
computer, stored  
in a binary  
format with  
digital signature.

**KD8 SETUP**  
Software  
destined to  
configure  
recorder settings  
by means of a PC  
computer.

**Export department:**  
**English:** +48 68 32 95  
302 / 321 / 276 / 386 / 233  
**German:** +48 68 32 95 305  
**French:** +48 68 32 95 304  
**Russian:** +48 68 32 95 321  
**Fax:** +48 68 32 54 091  
**e-mail:** export@lumel.com.pl  
LUMEL S.A.  
ul. Sulechowska 1  
65-022 Zielona Góra  
POLAND  
**WWW.LUMEL.COM.PL**

## EXEMPLARY FUNCTIONS OF KD8 ASSISTING SOFTWARES

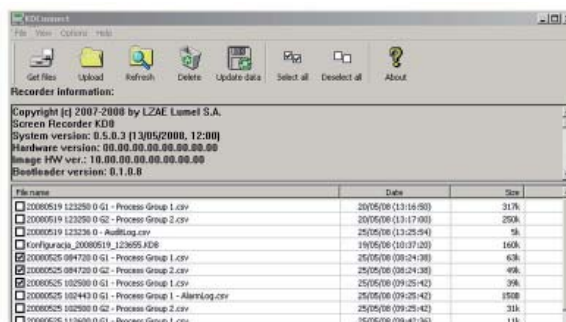
SOFTWARES  
ASSISTING THE  
KD8 RECORDER  
WORK:

### KD CONNECT

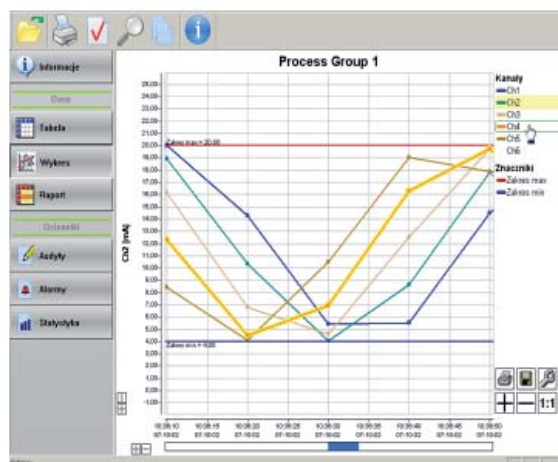
Software destined for the communication between the recorder and the PC computer through the USB interface in order to download archive data and record/erase on the CF card.

### KD CHECK

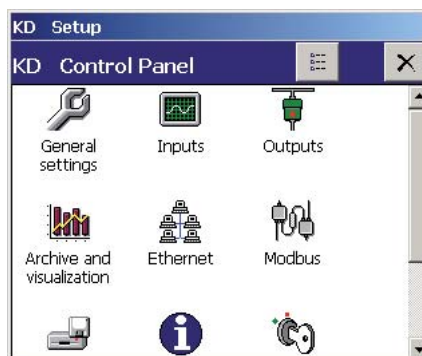
Software destined to verify the digital signature in archive data stored in text format.



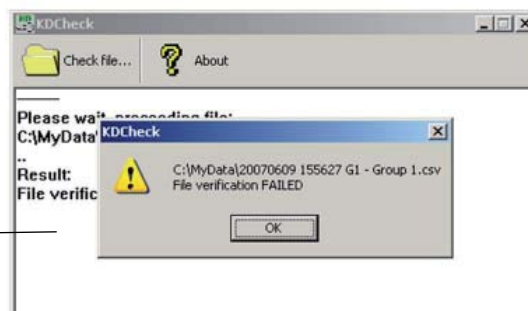
Downloading and erasing of archive data by means of the PC computer - KD CONNECT.



Review of archive data through the PC computer - KD ARCHIVE.



Configuration of the KD8 recorder by means of the PC computer - KD8 SETUP.

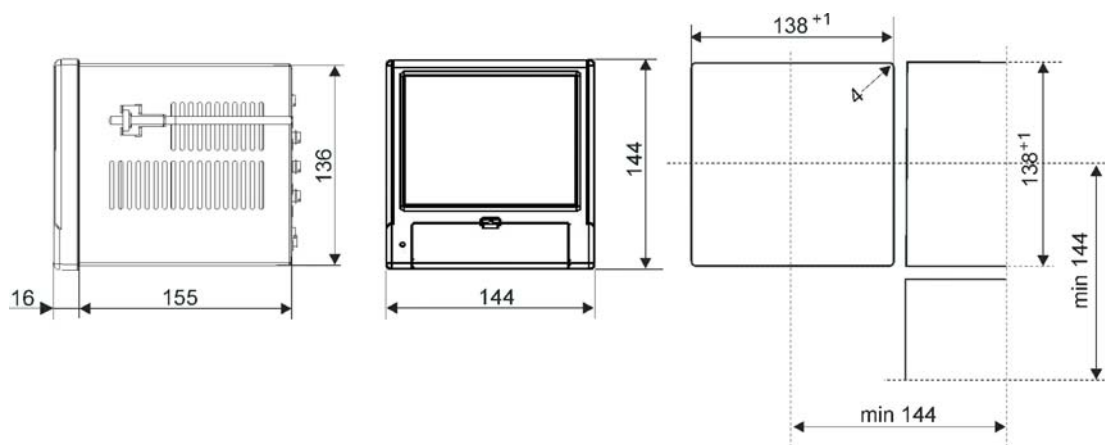


Checking result:  
incorrect file verification

Verification of the digital signature of text data - KD CHECK.

Export department:  
English: +48 68 32 95  
302 / 321 / 276 / 386 / 233  
German: +48 68 32 95 305  
French: +48 68 32 95 304  
Russian: +48 68 32 95 321  
Fax: +48 68 32 54 091  
e-mail: export@lumel.com.pl  
LUMEL S.A.  
ul. Sulechowska 1  
65-022 Zielona Góra  
POLAND  
WWW.LUMEL.COM.PL

## OVERALL DIMENSIONS



## SEE ALSO:



Temperature sensors.



Interface converter PD10.



KD7 recorder.



For more information about LUMEL's products please visit our website:  
[www.lumel.com.pl](http://www.lumel.com.pl)

## ORDERING

Screen Recorder KD8 -	X	X	X	X	XX	X
<b>Measuring inputs:</b>						
3 programmable measuring inputs	1					
6 programmable measuring inputs	2					
<b>Alarms and binary inputs:</b>						
without alarms and binary inputs	0					
alarms (NO relays) + binary inputs <sup>1)</sup>	1					
<b>Supply:</b>						
90..253 V a.c.	1					
<b>Softwares servicing the recorder from PC:</b>						
KD Connect, KD Check	1					
KD Connect, KD Check, KD Archive, KD8 Setup	2					
<b>Version:</b>						
standard					00	
custom made <sup>2)</sup>					XX	
<b>Acceptance tests:</b>						
without extra quality inspection requirements						8
with an extra quality inspection certificate						7
according to customer's request <sup>2)</sup>						X

<sup>1)</sup> for each 3 measuring inputs a package with 6 alarms and 4 binary inputs is installed

<sup>2)</sup> after agreeing with the manufacturer

### Example of order:

the code **KD8-1-0-1-1-00-8** means:

- KD8** - recorder of KD8 type,
- 1** - with 3 programmable measuring inputs,
- 0** - without alarms and binary inputs,
- 1** - supply: 90 .. 253 V a.c.,
- 1** - with KD Connect and KD Check softwares,
- 00** - in standard version,
- 8** - without extra quality inspection requirements.

### Export department:

English: +48 68 32 95 302 / 321 / 276 / 386 / 233  
German: +48 68 32 95 305  
French: +48 68 32 95 304  
Russian: +48 68 32 95 321  
Fax: +48 68 32 54 091  
e-mail: [export@lumel.com.pl](mailto:export@lumel.com.pl)

LUMEL S.A.  
ul. Sulechowska 1  
65-022 Zielona Góra  
POLAND

**WWW.LUMEL.COM.PL**