

# PD14 PROGRAMMER FOR LUMEL S.A. PRODUCTS

## FEATURES:



## INPUTS:



## OUTPUTS:



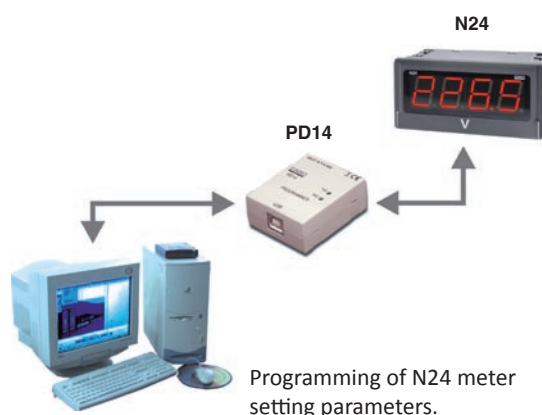
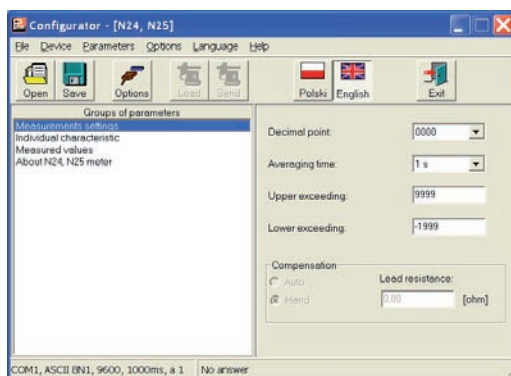
## GALVANIC ISOLATION:



- Destined to program parameters in LUMEL S.A. products.
- Enables the connection of LUMEL S.A. products to a PC computer through the USB interface.
- The device programming is carried out using free PD11 and LPCon programs.
- PD11 and LPCon programs enable:
  - change of device parameters,
  - storage and readout set up parameters to the file,
  - configuration of any device with the MODBUS protocol (LPCon).

## EXAMPLE OF APPLICATION

### LPCon program



## TECHNICAL DATA

Baud rate	9600 bps
Information unit	8N1 (8 data bits without the even parity bit, 1 stop bit)
Overall dimensions	43 x 51 x 20 mm
Wire length	1.5 m

## RATED OPERATING CONDITIONS

Supply voltage	Collected from the device and the USB port	
Temperature	ambient: 0...23...50°C	storage: 0...70°C
Relative air humidity	< 95%	inadmissible condensation
Housing protection grade	IP20	
Operating position	any	
Galvanic isolation	1000 V	

**Export department:**  
 Tel.: +48 68 45 75 139/  
 276/ 305/ 386  
 Fax: +48 68 32 54 091  
 e-mail: export@lumel.com.pl

LUMEL S.A.  
 ul. Stubińska 1  
 65-127 Zielona Góra  
 POLAND  
 WWW.LUMEL.COM.PL

PD14 enables the programming of:

- P11 and P12 transducers (PD11 program)
- digital meters, network parameter meters, transducers, controllers and others (LPCon).

PD11 and LPCon programs are available on our website:  
[www.lumel.com.pl](http://www.lumel.com.pl)

## ORDER EXAMPLE

The code **PD14 - 8** means a programmer without extra requirements.

## ORDERING CODE

	PD14 -	X
<b>Acceptance tests:</b>		
without extra requirements		8
with an extra quality inspection certificate		7
acc. to customer's request*		X

\* after agreeing with the manufacturer